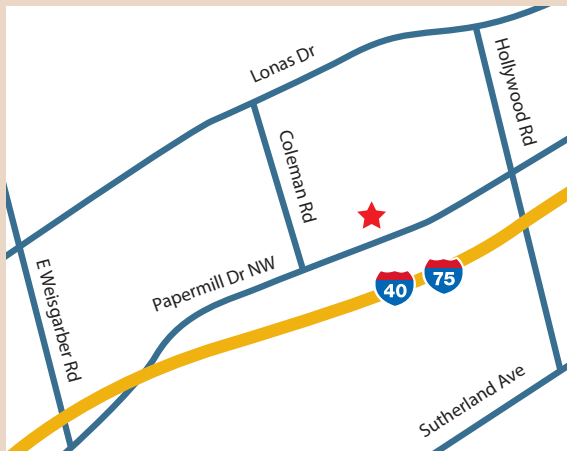


PREMIER

Vascular Access & Imaging Center

A Division of Premier Surgical Associates



Colony Park
4713 Papermill Drive, Suite 100
Knoxville, TN 37909

Phone: 865-588-8229
Fax: 865-212-0163

www.premiersurgical.com

TOSHIBA

www.medical.toshiba.com

TOSHIBA

Aquilion



better insight
better decisions

PREMIER

Vascular Access & Imaging Center

A Division of Premier Surgical Associates

Colony Park
4713 Papermill Drive, Suite 100
Knoxville, TN 37909

Open 8 a.m. - 4:30 p.m. • Monday through Friday

865-588-8229

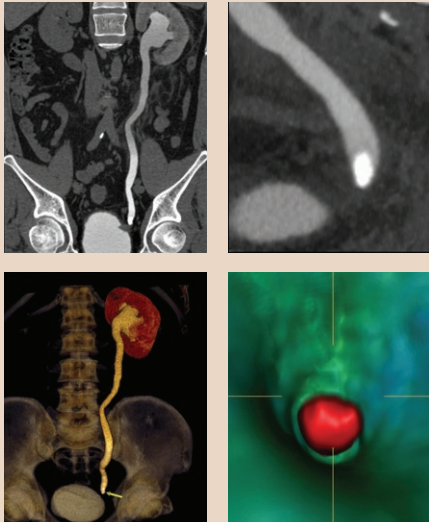
About the Exam

- Inform your surgeon if you have ever had a problem with dye given as part of any test.
- Let your surgeon know if you have or have had asthma.
- If you are diabetic and take Glucophage or any other medication for diabetes, please tell the surgeon and you will receive an instruction sheet with additional instructions.
- Our office will arrange to have your previous films, if any, sent to the Imaging Center. You may be asked to assist in this process, as it is very important these films are available for review.
- You may be asked to have lab work done prior to your test. This lab work will be done during your appointment at the Imaging Center on the date of your CT scan.
- If you are given oral contrast to drink, the instructions are as follows:
 - Drink 1 1/2 bottles 1 1/2 hours prior to your appointment time.
 - Drink the other 1/2 bottle upon arrival.
- No food or drink except water for four hours prior to your test. You may take medications as prescribed with water.
- Stay well hydrated and drink plenty of water before and after your test.
- After your trouble-free exam, all normal activities may be resumed, unless otherwise directed by your surgeon.

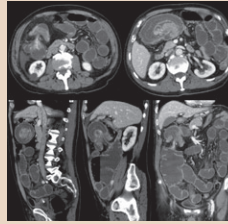
You've never looked better.

Patient care and diagnosis have significantly improved with the growing use of computed tomography (CT). CT scanning blends the traditional technology of X-rays with the latest computer innovations.

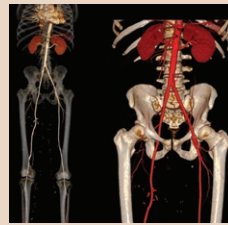
Using a series of X-ray beams, the CT scanner creates cross-sectional images. A computer reconstructs these "slices" to produce the 3-D image. The result is a picture with greater detail than traditional X-rays. And better information means a more accurate diagnosis from your surgeon.



Types of CT Scans



Abdomen and Pelvis Scan – View the overall structure of such abdominal organs as the colon, kidneys, liver and pancreas to visualize the condition of these organs.



Vascular (arteries and veins) Imaging – Visualize large arteries such as the ones that feed the lungs and kidneys.

Uses for CT Scans

Your surgeon may use CT to:

- Check the health of arteries to the lungs or liver
- Identify unusual structures in major blood vessels
- Examine the condition of your colon, kidneys, liver or pancreas

No matter which scan you have, your surgeon will use the high-resolution CT images to make the most accurate diagnosis possible.

Contrast Media

Your surgeon is interested in seeing specific organ function and vasculature. Contrast media make these organs, arteries and vessels more visible.

You may feel a slight warming sensation when the contrast medium is administered with a small IV.

The contrast used contains iodine, so consult with your physician prior to your CT exam if you have ever had an allergic reaction to iodine.

The CT Exam

A CT exam is a quick, painless procedure. The scanner will acquire the images in just a few seconds while you are comfortably lying on the patient table. Ask your surgeon about total exam duration, since exam times will vary.

During the exam:

- You may be asked to wear a gown for image clarity.
- Your exam table will slowly move into scanning position within the CT scanner's doughnut-shaped opening.
- You will be asked to remain still and hold your breath during the few seconds the scanner captures the image.



PREMIER
Vascular Access & Imaging Center

A Division of Premier Surgical Associates

865-588-8229

www.premiersurgical.com